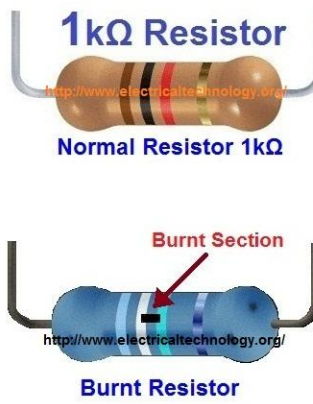
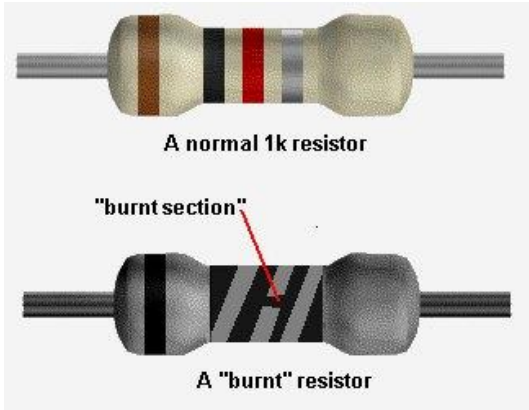
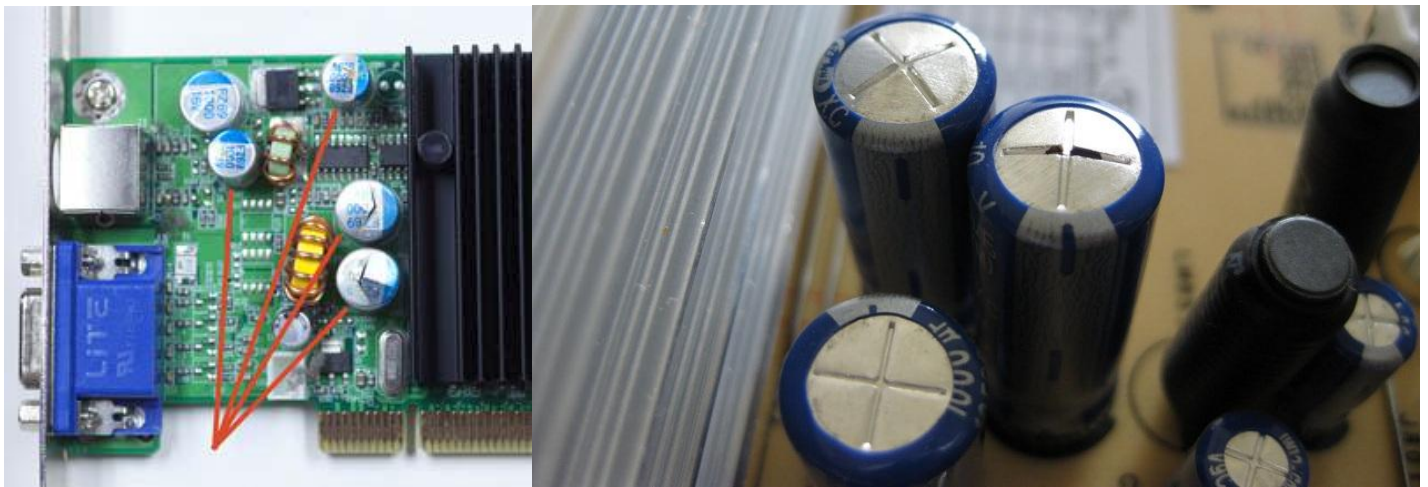


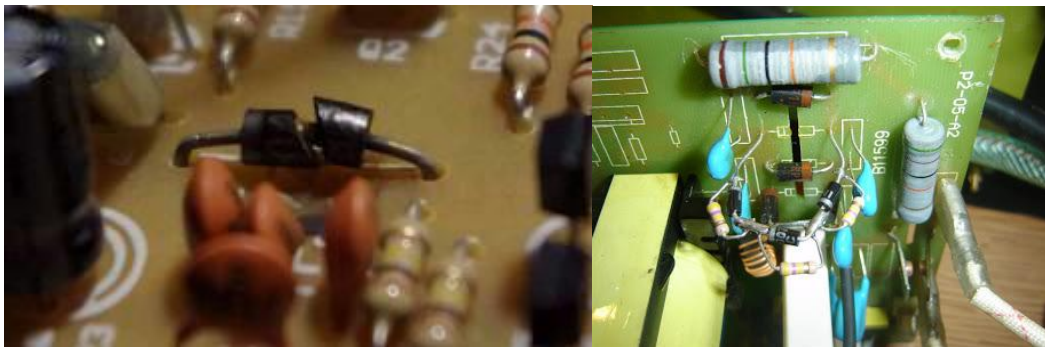
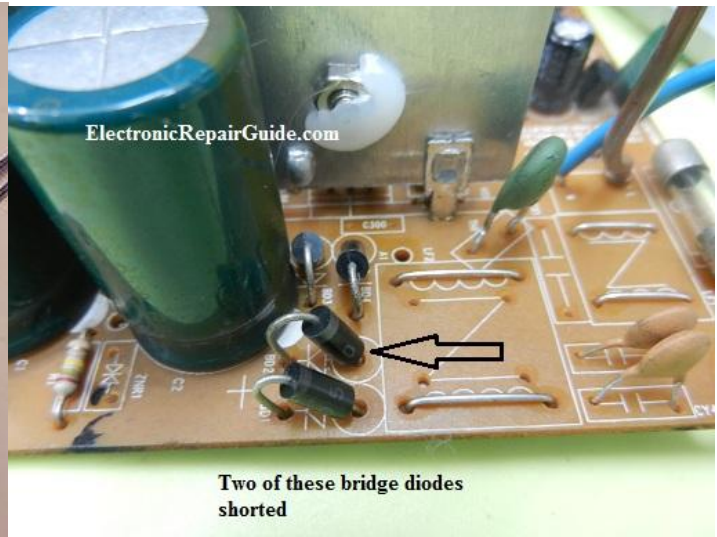
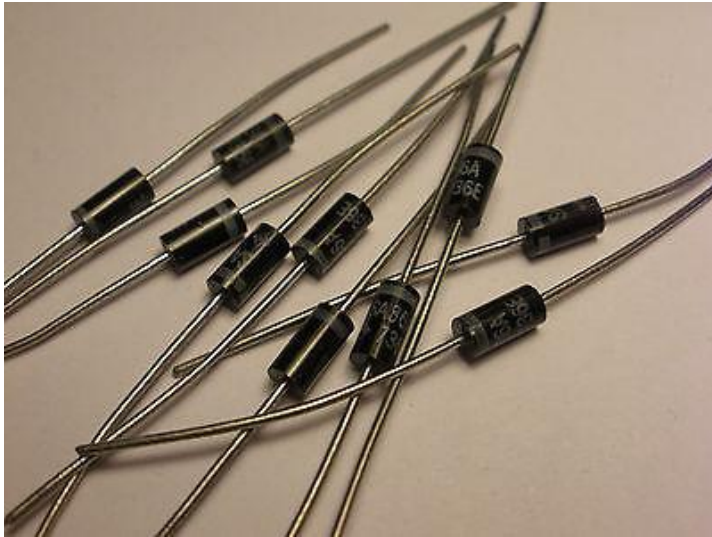
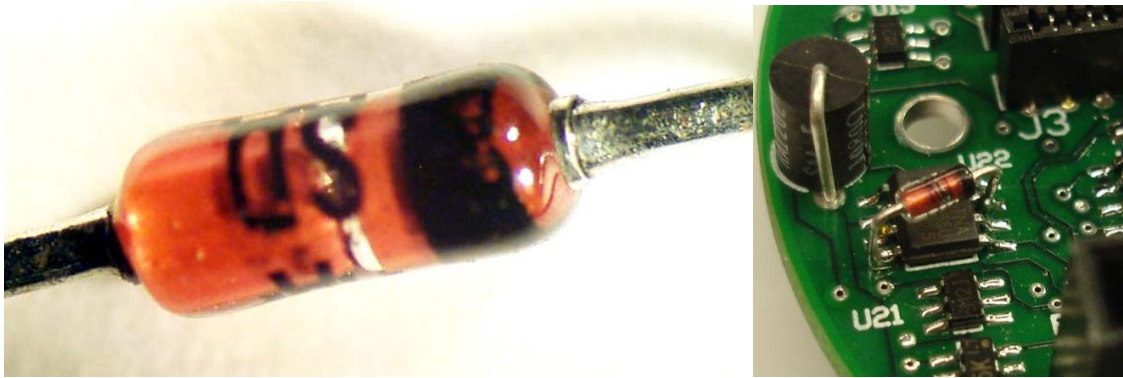
Resistors



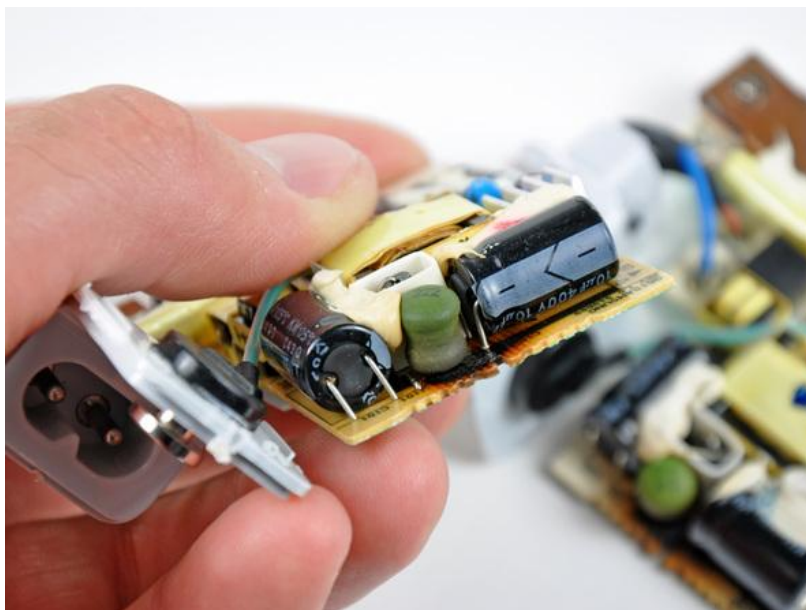
Electrolytic Capacitors



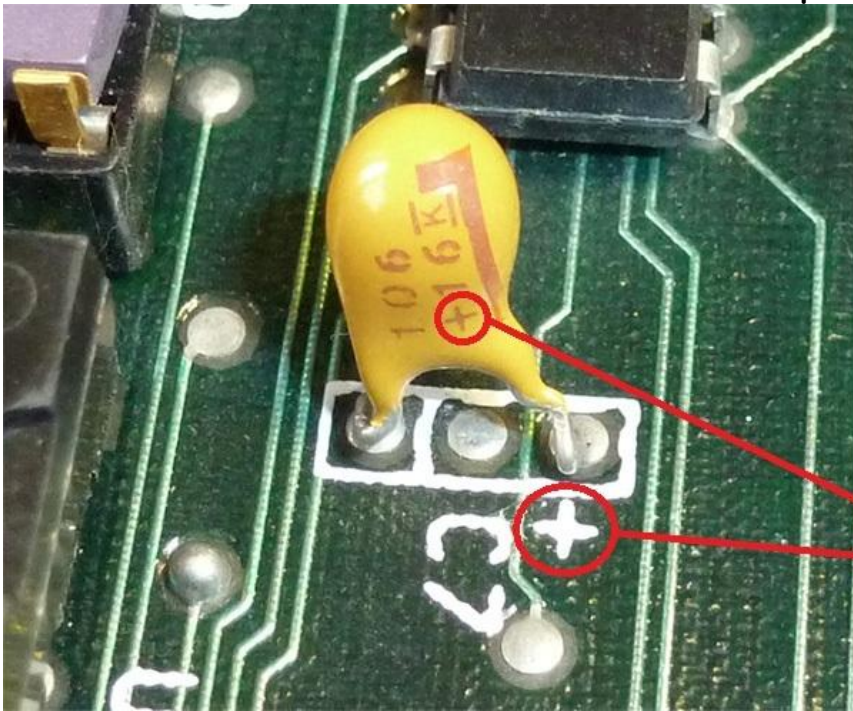
Diodes



Inductors



Tantalum Capacitors



This tantalum capacitor is one of many on the 16K-64K type of 5150 motherboard.

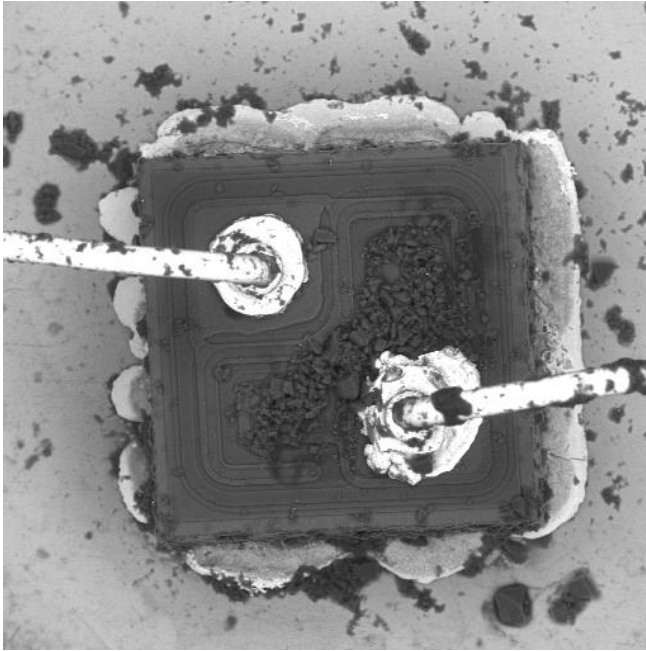
The position has three holes, but is not designed for a three-legged tantalum.

Replace only with a two-legged tantalum.

Positive leg in positive hole



Transistors



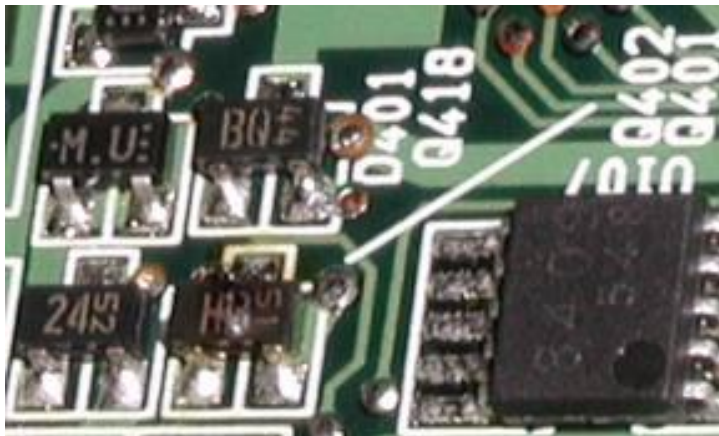
High Power transistor failing from current shock



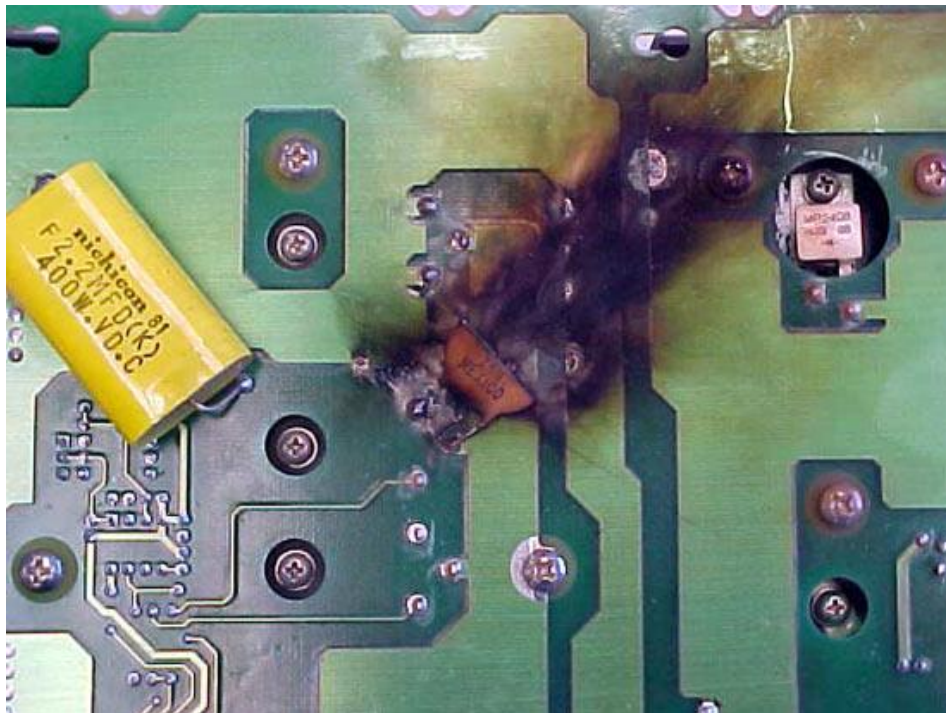
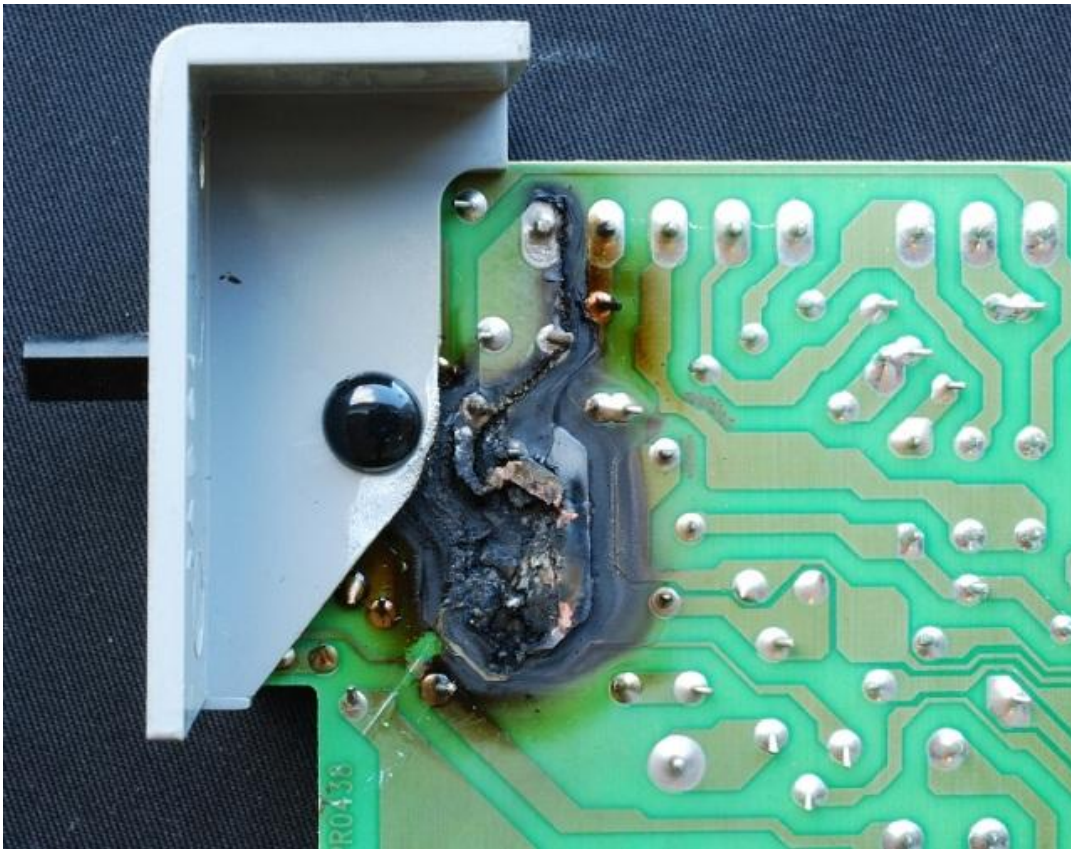
As New

Silicon starting to melt from overload

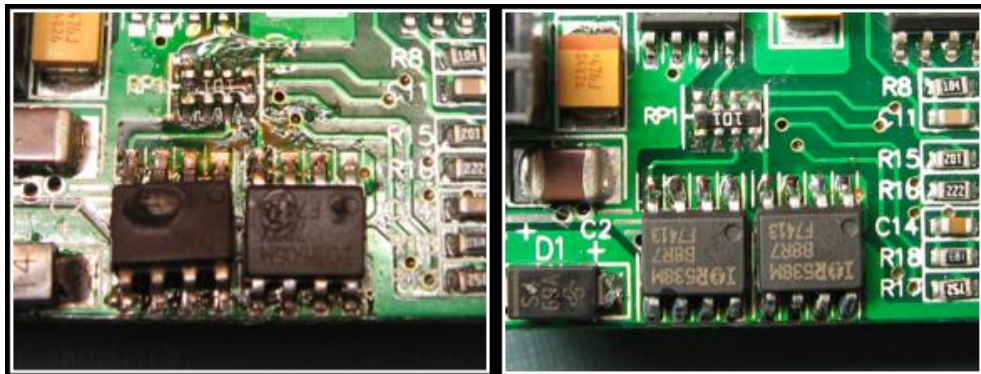
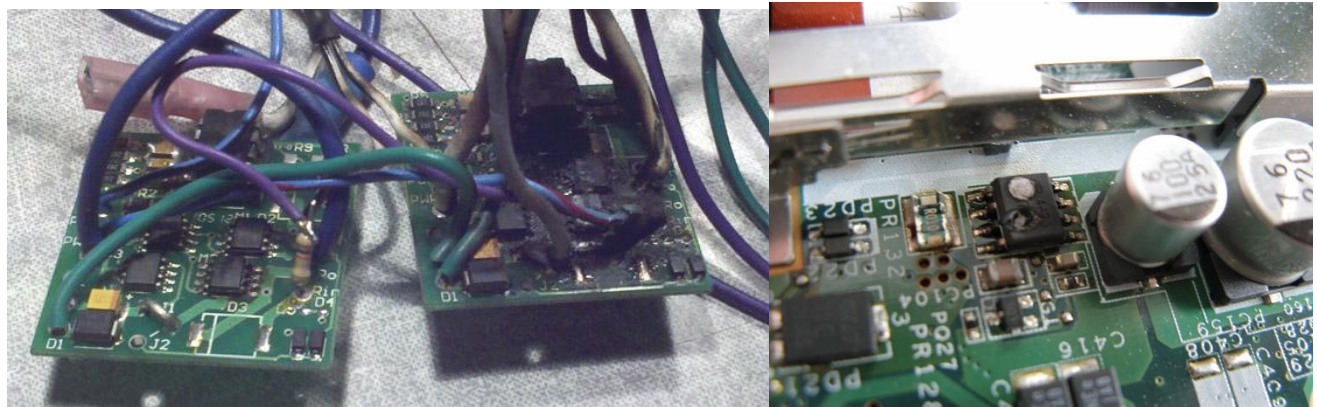
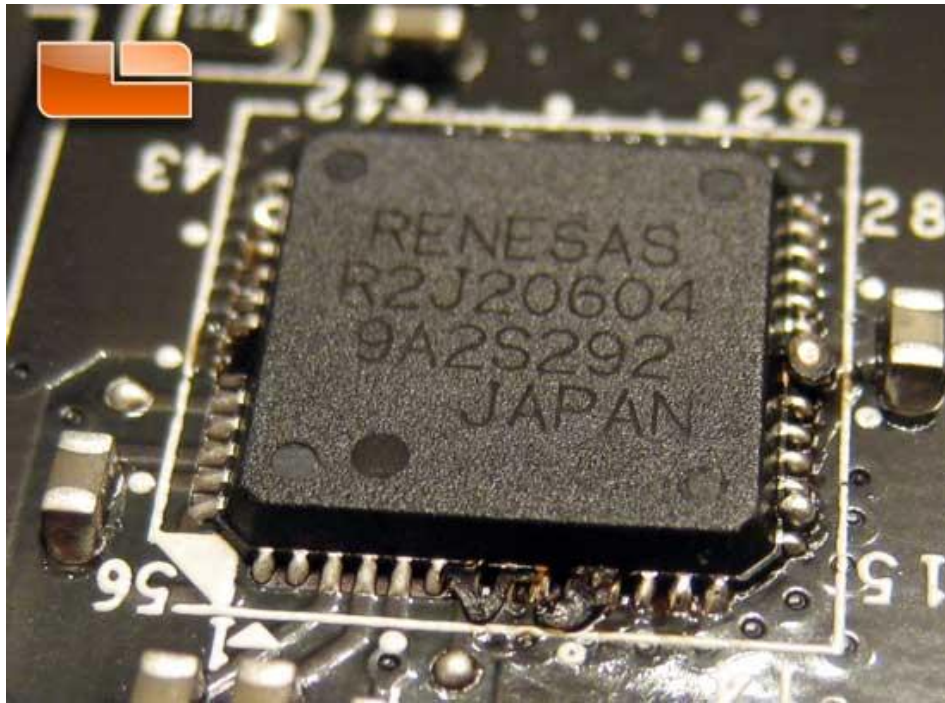
Thermal failure of the power transistor



PC Boards



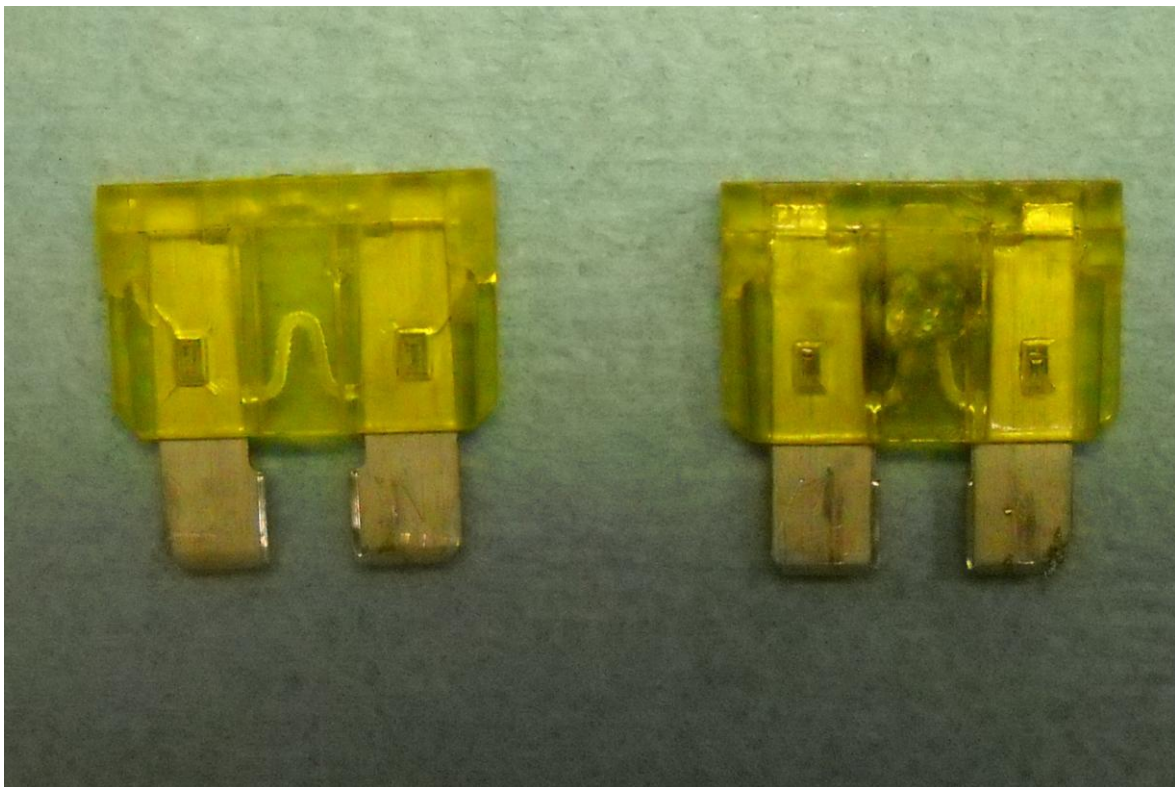
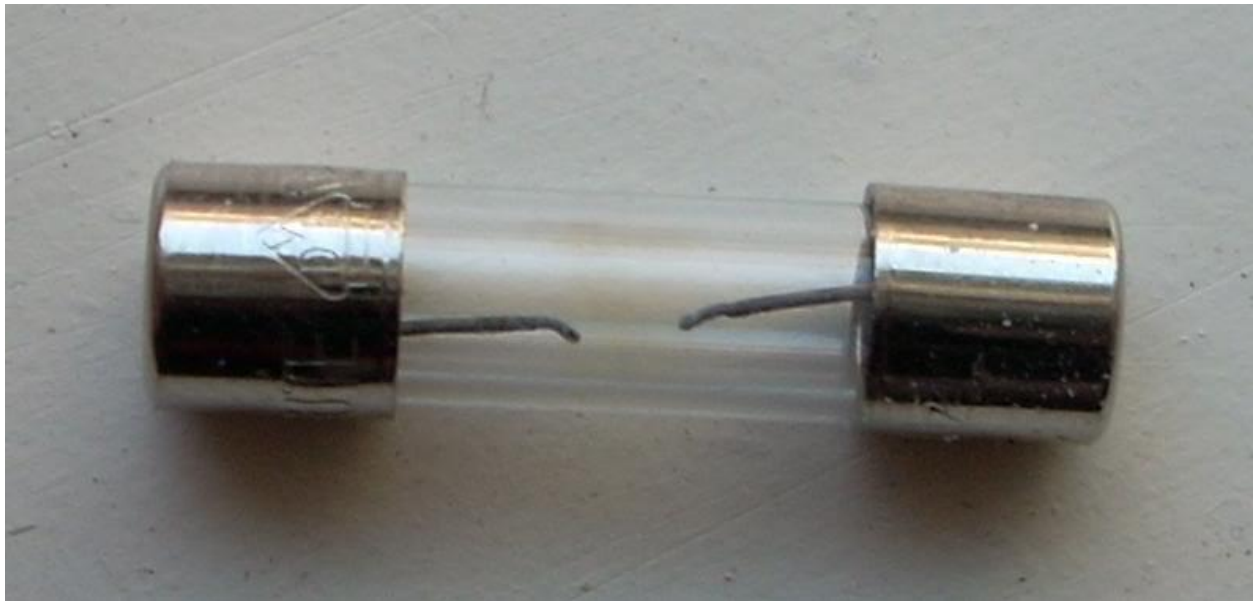
MOSFET

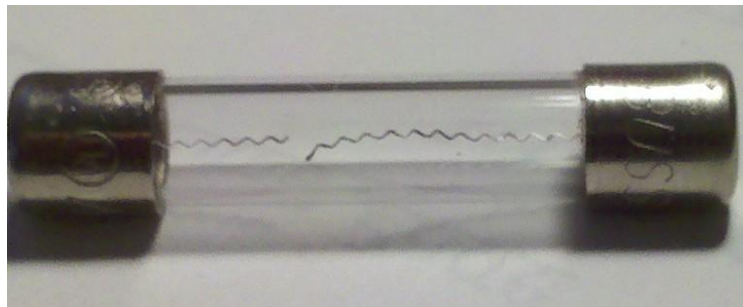
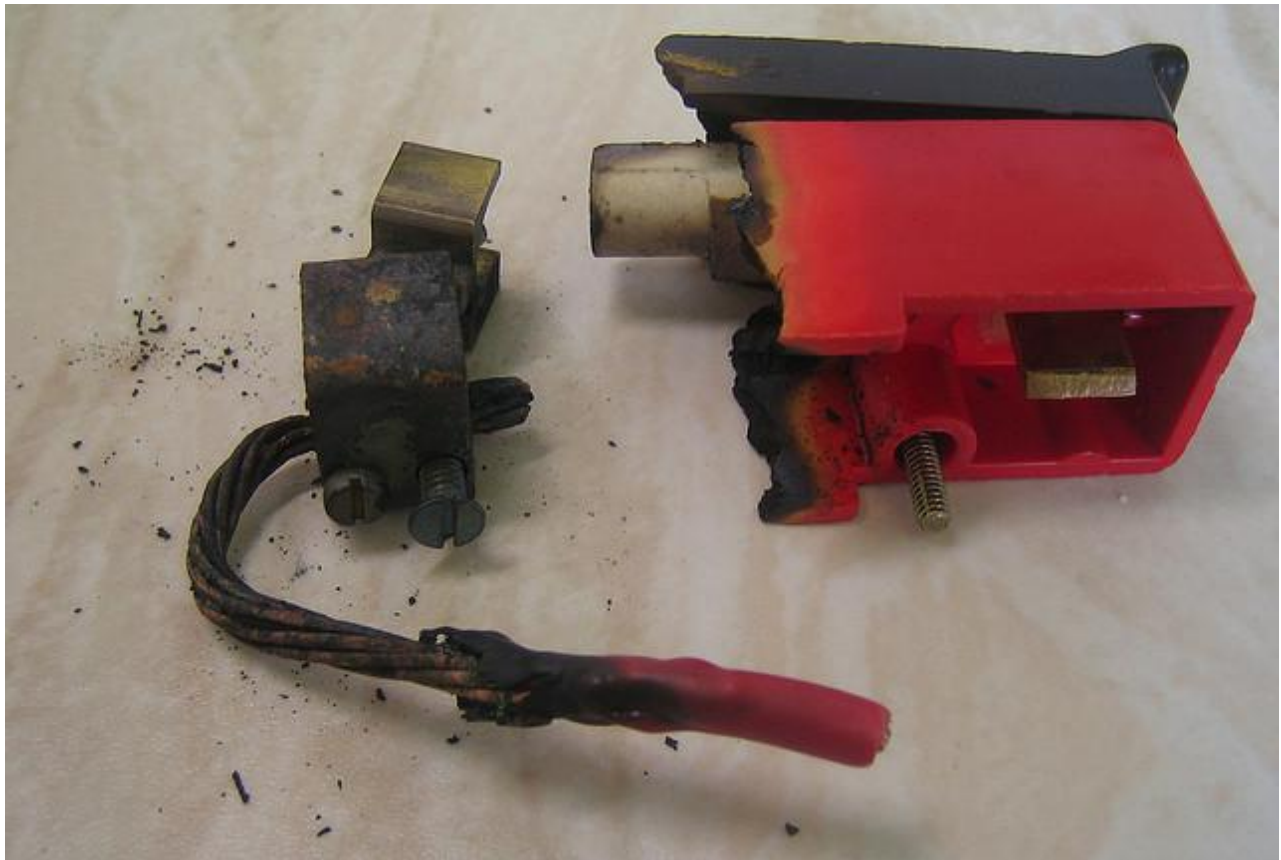
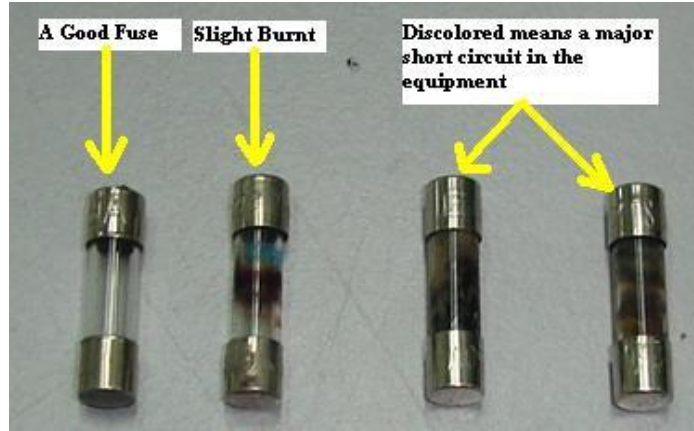


Potentiometers



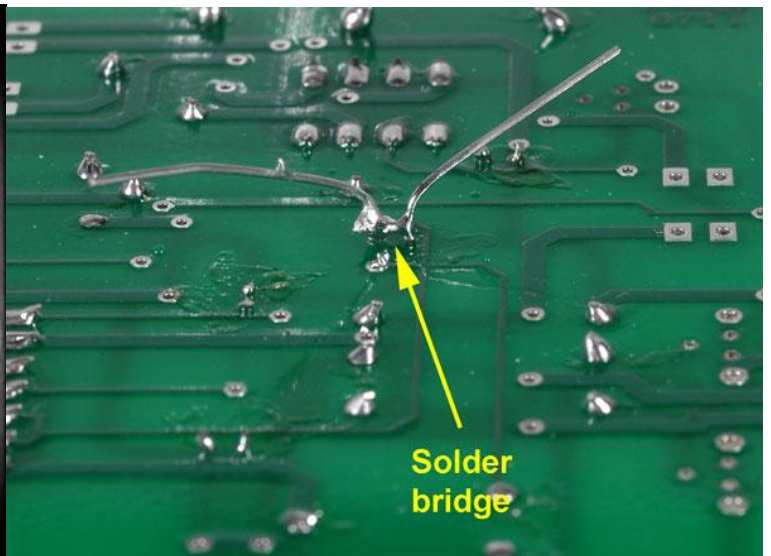
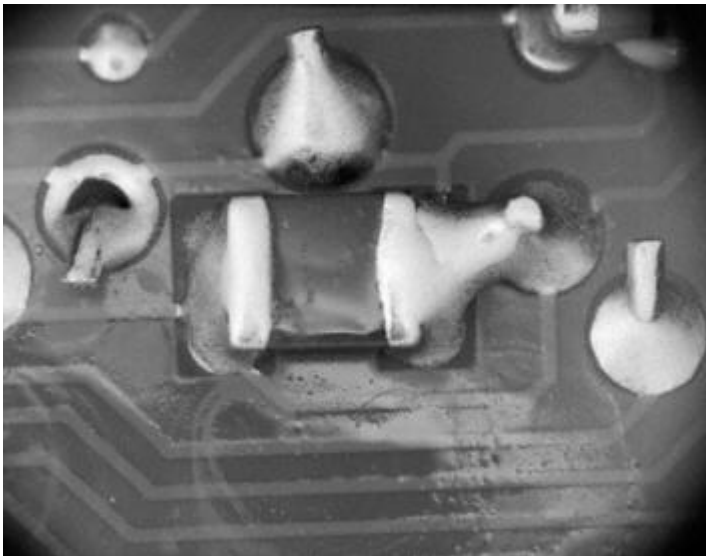
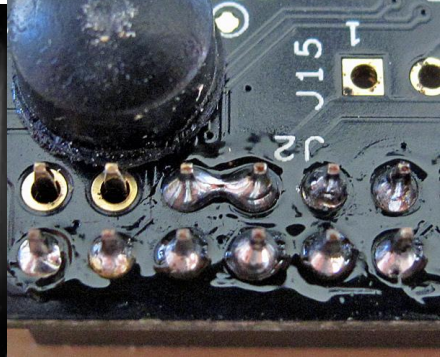
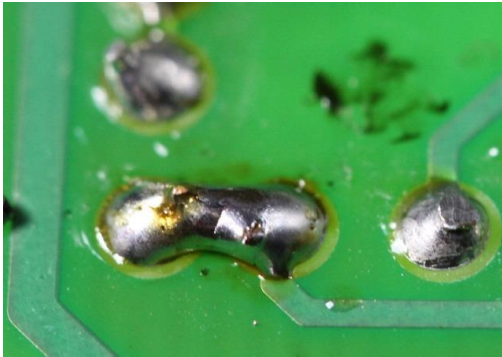
Fuses





Solder Bridges

(While these are not component failures, they will cause CATASTROPHIC component failures.)



Transformers

